



XVI Limanowa Cup 2018

Stary Sącz, 27-29.07.2018

BULLETIN 1

www.limanowacup.pl / www.patriamlynne.pl



Organizer :

Uczniowski Klub Sportowy

PATRIA MŁYNNE

34-601 Limanowa 3

NIP: 737-17-49-167

tel. +48 660 444 292

e-mail: witollds@poczta.onet.pl

www.patriamlynne.pl



Honorary Patronage :

Mayor of Limanowa – Władysław Bieda

Mayor of Stary Sącz – Jacek Tomasz Lelek

Head of Limanowa Commune – Władysław Pazdan

Head of Polish Orienteering Association – Krzysztof Urbaniak

Organizing Committee :

Event director – Marek Golonka

General Referee – Witold Sochacki

Map makers – Jacek Kozłowski, Piotr Pietroń

Course planners – Jacek Kozłowski i Piotr Pietroń

Competition office – Jolanta Kozłowska, Katarzyna Pietroń

SportIdent – Marcin Leśnicki

Programme :

27.07.2018 (Friday):

15:00 - 1st stage of Limanowa Cup – middle distance, Makowica

28.07.2018 (Saturday):

12:00 - 2nd stage of Limanowa Cup – long distance, Stary Sącz

29.07.2018 (Sunday):

10:00 - 3rd stage of Limanowa Cup – middle distance, Gołkowice

13:30 - Awards and closing ceremony of 16th Limanowa Cup

Competition:

Three-day individual competition – handicap on the last day– joint classification after 3 days.

Competition from the Central Competition Calendar of the Polish Orienteering Association.

Classes:

KM10R / KM10N / KM10 / KM12 / KM14 / KM16 / KM18 / KM20 / KM21E / KM21A / KM35 / KM40 / KM45 / KM50 / KM55 / KM60 / KM65 / KM70 / KM75 / KM80 / OPEN

The organizer reserves the right to join categories if the number of competitors is too small.

Entry:

Entry deadline is **20.07.2018**. After this date you will be able to add entries only for OPEN class.

Entry form available on our website in *Entries* tab or at www.limanowacup.pl/entrysystem

On the entry form you can specify your needs for accommodation, meals and parking. If you would like to receive an invoice, please fill out appropriate section on the form. The invoice will be available in the competition office during accreditation.

Changes and additional entries can be done using appropriate options in the entry form until 20.07.2018. All later changes can be done only via email.

Current list of entered competitors is available on the website in the *Entries* tab or in the entry system.

Regarding accommodation and board:
witolds@poczta.onet.pl; tel. +48 660 444 292

In case of any issues with the entry system:
pietronp@gmail.com

Area and maps:

1. Middle distance – Makowica
scale 1:10 000, e = 5 m, author: Piotr Pietroń
2. Long distance – Stary Sącz
scale 1:10 000, e = 5 m, authors: Jacek Kozłowski, Piotr Pietroń
3. Middle distance – Gołkowice
scale 1:10 000, e = 5 m, author: Jacek Kozłowski

Maps for the youngest and oldest classes will be in scale 1:7 500.

Maps updated in spring and summer of 2018 using the latest available technologies: GPS, laser scanning (LIDAR), ortophotomap.

All maps will be placed in protective foil.

Terrain description:

Mountainous terrain, with both deep and shallow ravines.

Varying runnability: from very good (beech forest) through moderate , with more dense parts (overgrown old logging ares and clearings).

Moderate network of roads, with many wood transportation roads.

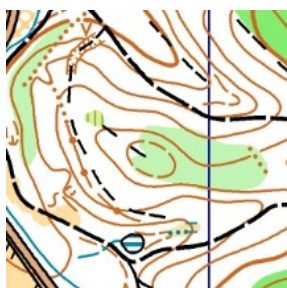
The terrain features many streams, with marshy areas in some places.

Stage 1 terrain has many rocks and boulders.

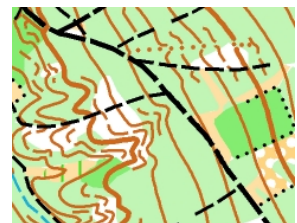
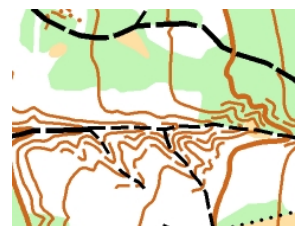
E1



E2



E3



Entry fee:

The entry fee does not depend on the date of entry:

3 stages of Limanowa Cup:

KM18+ - 75 zł / 21 €

other – 55 zł / 18 €

One stage only:

KM18+ - 30 zł / 8 €

other – 20 zł / 5 €

The entry fee is calculated by the system. In *My entry* tab please choose option *Generate summary*, which creates a pdf document with all fees added together.

Payment via wire transfers to the club's account:

IBAN 25 8804 0000 0000 0016 6618 0001

KOD SWIFT - POLUPLPR

Due date is 20.07.2018. All later payments can be done in the competition office, cash only.

Accommodation:

Available accommodation options:

1. Primary school in Limanowa

150 places, own sleeping bag and sleeping mat, 12 PLN (3€) per person per night

2. ZS1 dormitory in Limanowa

50 places, beds with linen, 30PLN (8€) per person per night

3. Primary school in Gołkowice

120 places, own sleeping bag and sleeping mat, 13 PLN (3€) per person per night

Accommodation booking available only through the entry system in the 'Entries' tab on the website. We do not book accommodation via email!

Punching system:

SPORTident punching system will be used.

SI cards available for borrow, 3-day fee is 10 PLN.

If you do not fill out the SI box in the entry form, it will be treated as a wish to borrow one. After 20.07.2018 all competitors without SI will be assigned SI cards provided by the organizer, with no change options.

Fine for losing an SI card is 120-200 PLN (depending on its type).

Other:

1. Current medical check-up is obligatory.
2. Competitors' insurance in their own capacity – team leaders responsible.
3. The organizer provides medical care during the competition.
4. The organizer is insured against civil liability.
5. Current information is available on the competition website:
www.limanowacup.pl